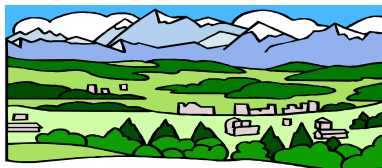


OYSTER BAY TRAVEL CENTER
presents
Alpine Wonderland



April 24-May 5, 2012

Featuring

Frankfurt, Rhein Cruise, Heidelberg, Freiburg, Luzern, Oberammergau, Munich,
Salzburg

Included: Roundtrip scheduled air via Lufthansa from JFK
8 nights in 3 * hotels
Breakfast & Dinner daily
Private motor coach throughout
All sightseeing, admissions
English speaking escorts & guides
Hotel & airline taxes, hotel restaurant gratuities
Luggage handling (1 piece)

Land Rate based on 25 people- Double: \$2350 p.p./Single \$2730
on 50 people- Double: \$2025 p.p./Single \$2405
Air \$1240-subject to change until deposited

Cancellation insurance is HIGHLY recommended at \$229.00 per person (over 60) and \$179 (under 60) and MUST be included with deposit.

SPACE IS LIMITED!! FIRST COME, FIRST SERVED!!

Please tear off, fill out and send a check for \$300 per person, plus insurance premium, to
Oyster Bay Travel, 53 Audrey Ave, Oyster Bay, NY 11771 by Oct 21, 2011.
Call Jim @ 516 922 4700 if you have any questions.

NAME (S) _____ Date of Birth _____

(as appear on passport)

Passport # _____ Exp date _____

Exp date _____

ADDRESS _____

PHONE _____ email _____

No refund after final payment is made. Cancellation insurance must be included
with deposit and covers pre existing conditions. Germany 2012

ITINERARY

Here is the schematic itinerary:

April 25

Overnight flight from JFK to Frankfurt

April 26

Upon arrival at Frankfurt airport meet your English speaking tour escort and transfer to the city center for an orientation tour, including cruise on the Rhine. Continue onto your hotel in Heidelberg for dinner and overnight

April 27

Morning guided tour of Heidelberg, including visit to the Castle (inner courtyard and big VAT).

Afternoon transfer to Freiburg for dinner and overnight at the hotel.

Transfer from Freiburg to Lucerne. Dinner and overnight in Lucerne

April 29

Full day excursion to Mt. Pilatus from Lucerne. Transportation by bus and cable car (the boat does NOT operate in April).

Dinner and overnight in Lucerne

April 30

Transfer from Lucerne to Oberammergau. Orientation city tour with escort. Dinner and overnight in Oberammergau

May 01

Transfer from Oberammergau to Munich. En route stop to visit Linderhof Castle and Neuschwanstein Castle.

Dinner and overnight in Munich

May 02

Half day guided tour of Munich, including visit to Nymphenburg Palace and BMW World.

Dinner at Hofbrauhaus and overnight in Munich.

May 03

Excursion to Salzburg, including entrance fees to Mozarthaus

Dinner and overnight in Munich

May 04

Departure transfer from Munich hotel to Munich airport

FEATURES:

- 8 (eight) night accommodations at 3* hotels (2* sup. In Heidelberg), as indicated or similar, subject to availability and confirmation, included as follows:
 - 1 night accommodation at 2* sup. Ibis Hotel in Heidelberg (<http://www.ibishotel.com/gb/hotel-1447-ibis-heidelberg/index.shtml>)
 - 1 night accommodation at 3* Mercure am Muenster Hotel in Freiburg (<http://www.mercure.com/gb/hotel-0492-mercure-hotel-freiburg-am-muenster/index.shtml>)
 - 2 night accommodations at 3* Alpina in Lucerne (<http://www.alpina-luzern.ch/>)
 - 1 night accommodation at 3* Alte Post hotel in Oberammergau (<http://www.altepost.com/>)
 - 3 nights accommodations at 3* Carat Hotel in Munich (<http://www.carat-hotel-muenchen.de/en/welcome.php>)
- **Meals** included as follows:
 - Continental buffet style breakfast and dinner daily at the hotel or nearby restaurant (beverages NOT included)
- **Private guide services** as follows:
 - Half day tour of Frankfurt, including Rhine cruise between Ruedesheim and St. Goar
 - Half day tour of Heidelberg, including entrance fees to the Inner courtyard and big Vat at the Castle
 - Full day excursion to Mt. Pilatus, including roundtrip by cable car between Kriens and Pilatus Kulm
 - Half day tour Linderhof Castle and Neuschwanstein Castle, including entrance fee
 - Half day tour of Munich, including entrance fees to the Nymphenburg Palace and visit to BMW World
 - Full day excursion to Salzburg, including half day city tour with entrance fees to Mozarthouse
- Hotel Service charges and VAT tax
- **Porterage** of 1 pc of luggage per person at airports and hotels (in/out)
- **Hotel services charges** and German Government tax

Price does NOT include:

- Air transportation (**Price as shown above, including \$100 deposit**)
- Lunches and beverages during dinners
- Sightseeing tours and entrance fees other than specified
- Bus use after 8PM, except for dinner at Hofbrauhaus transfer
- Gratuities and extras
- Anything not mentioned in the "Features"

Contact Linda Heelan with any questions.

gggwunderbar@gmail.com